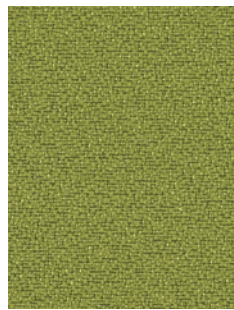
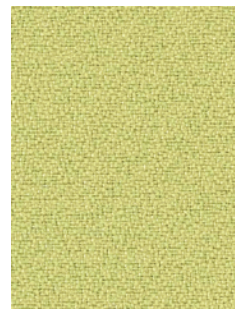


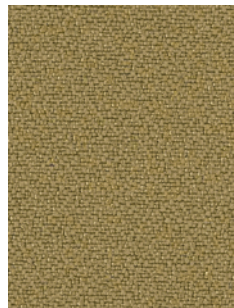
GREEN
绿色
GR08



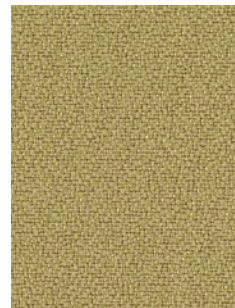
YELLOW GREEN
绿黄色
GR07



LIGHT LIME
亮青檬绿
GR06



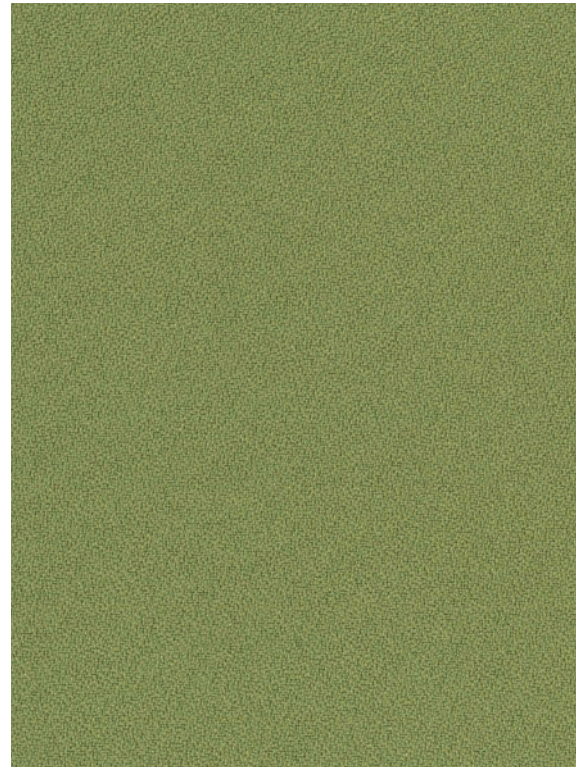
OLIVE
橄榄色
GR02



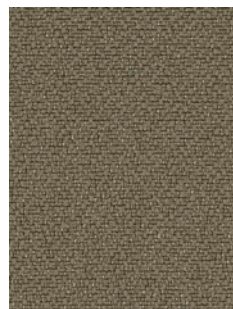
DARK KHAKI
暗卡其色
GR05



DARK PINE GREEN
深松绿色
GR01



DARK SEA GREEN
暗海绿色
GR04



CLAY
泥土色
GR03

01 Fabric / Product Information 产品资料

Fields of application 布料应用

Panel System / Office Seating / Collaboration Seating
屏风系统 / 办公椅 / 协作家具

Materials 成分

100% Polyester 聚酯纤维

Weight 宽度

160 cm

Width 克重

562 g/lm

Abrasion resistance 耐磨性

> 100,000 rubs 转数
Martindale method 马丁代尔测试 (9kPa Pressure 总压力)
ISO12947-2:1998

Flammability 阻燃性

Pass 合格
California Technical Bulletin 117-2013 Section 1

Colour fastness to light 光度色牢度

5
GB/T 8427-2008 Method 3

Colour fastness to rubbing (wet/dry)
耐磨色牢度 (湿/干)

Wet 湿: 4.5
Dry 干: 4.5
AATCC 8-2013

NOVO WORKSTYLE - CHINA

诺浩家具(中国)有限公司
NOVO WORKSTYLE (CHINA) CO., LTD.

总公司及工厂 Headquarters and Factory
中国苏州太仓市浏河镇苏张村
沪太新路129号, 215431
No.129, HuTaiXin Road, LiuHe Town,
Tai Cang City, Jiangsu Province,
China, 215431
Tel +86-512 8160 3000
Fax +86-512 8160 3001

上海分公司 Shanghai Office
中国上海市长宁区番禺路381号幸福里
E座4楼411, 200052
Room 411, Building E, G-Art, No.381 Panyu
Road, Changning District, Shanghai, China,
200052
Tel +86-21 6280 581

广州分公司 Guangzhou Office
中国广州市越秀区沿江东路406号港口中心
7楼707室, 510100
Room 707, 7/F, Port Center, 406 Yan Jiang
Dong Road, Yuexiu District, Guangzhou,
China, 510100
Tel +86-20 8130 6113
Fax +86-20 8130 5127

北京分公司 Beijing Office
中国北京市朝阳区大羊坊路89号
新华国际广场D座6层608室, 100122
Room 608, 6/F, Block D, Xinhua
International Plaza, No. 89 Dayangfang
Road, Chaoyang District, Beijing, China,
100122
Tel +86-10 8736 3936

经销总部 Dealer Headquarters
中国上海市长宁区番禺路381号幸福里
E座4楼401, 200052
Room 401, Building E, G-Art, No.381 Panyu
Road, Changning District, Shanghai,
China, 200052
Tel +86-21 6280 5800 #8011

深圳分公司 Shenzhen Office
中国广东省深圳市福田区商报路7号
天健创业大厦1107室, 518034
Unit 11/F, Room 1107, Tian Jian Chuangye
Building, Shangbao Road No.7, Futian
District, Shenzhen, China, 518034
Tel +86-755 8345 6882
Fax +86-755 8290 2762

NOVO WORKSTYLE - HONG KONG

诺浩家具(香港)有限公司
NOVO WORKSTYLE HK LTD.

中国香港柴湾祥利街9号祥利工业大厦3楼
3/F, Cheung Lee Industrial Building,
9 Cheung Lee Street, Chai Wan,
Hong Kong, China
Tel +852-2838 3262
Fax +852-2838 2690

NOVO WORKSTYLE - MALAYSIA

NOVO WORKSTYLE MALAYSIA SDN BHD

3A-23A, Eco Sky, No. 972, Batu 6 ½, Jalan
Sultan Azlan Shah, 68100 Kuala Lumpur,
Malaysia
Tel +603-6242 8670
Fax +603-6241 8670

样板会因为批次不同, 货品并不能保证绝对相同及出现色差。
Samples are representative of the materials to be supplied and
may not indicate an exact match; some variation may occur.

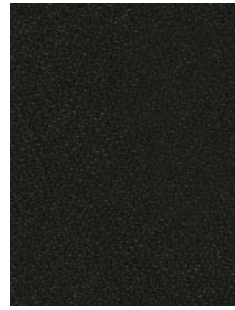
www.novoworkstyle.com

NOVO Workstyle
Design for Tomorrow

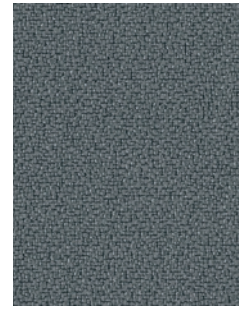
SHD1902-750

NOVO Workstyle
Design for Tomorrow

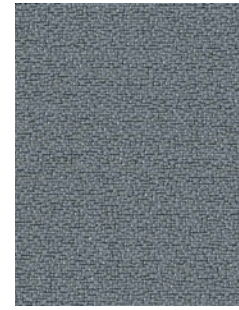
01 / Fabric



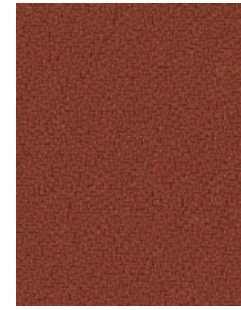
BLACK
黑色
CO04



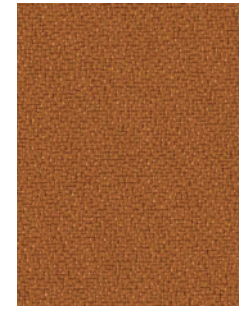
DARK SLATE GREY
暗墨灰色
CO01



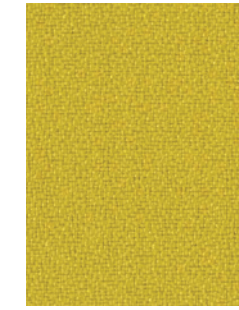
SLATE GREY
墨灰色
CO03



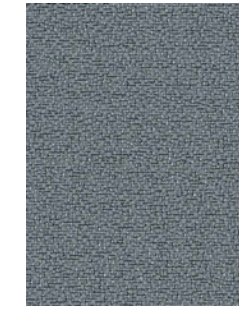
FIRE BRICK
砖红色
FU06



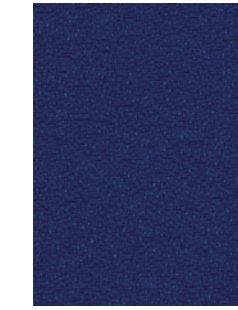
DARK ORANGE
暗橙色
FU07



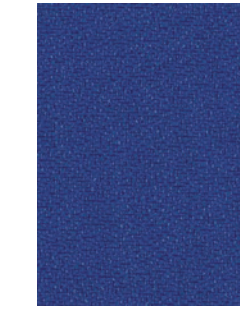
MUSTARD YELLOW
芥末黄
FU02



SAPPHIRE
蓝宝石色
OC03



NAVY BLUE
藏青色
OC02



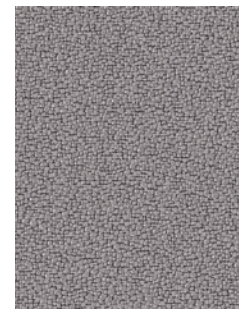
LAPIS LAZULI
天青石蓝
OC05



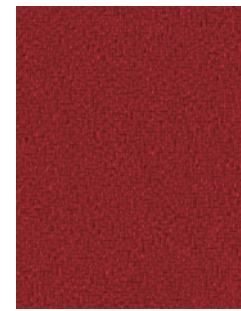
DIM GREY
暗灰色
CO02



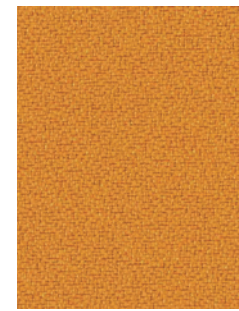
SILVER
银白色
CO05



THISTLE
薊紫色
CO06



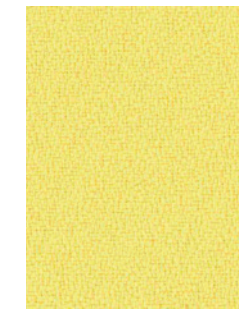
RED
红色
CH01



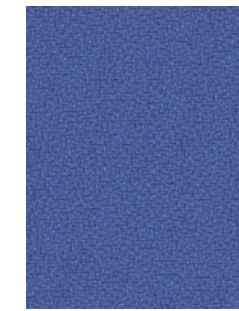
ORANGE
橙色
FU05



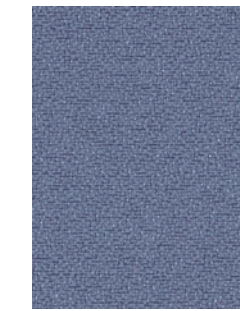
AMBER
琥珀色
FU04



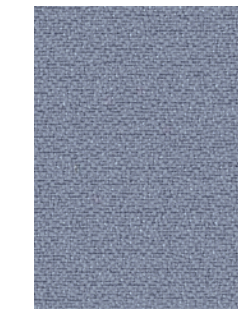
LEMON
柠檬黄
FU01



CERULEAN BLUE
蔚蓝色
OC01



CORNFLOWER BLUE
矢车菊蓝
OC07



PALE DENIM
灰丁宁蓝
OC06



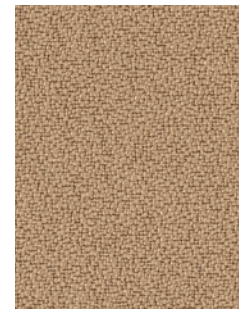
LIGHT STEEL BLUE
亮钢蓝
OC08



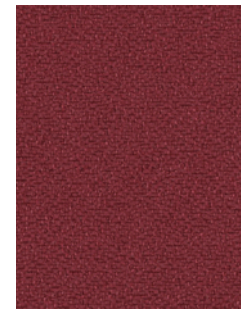
DARK BROWN
深褐色
SA06



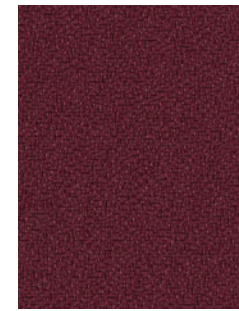
BROWN
褐色
SA05



BURLYWOOD
硬木色
SA03



CRIMSON
樱桃红
CH04



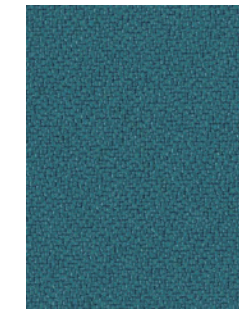
CARDINAL RED
板机红
CH03



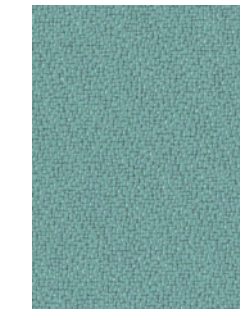
MAROON
褐红色
CH02



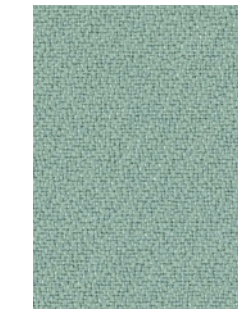
INDIGO
靛色
LA02



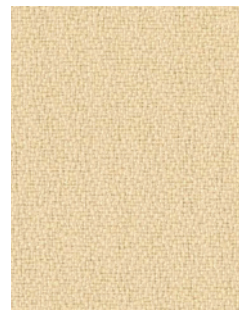
PEACOCK BLUE
孔雀蓝
LE01



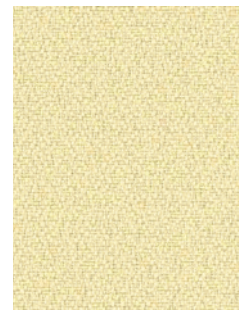
TURQUOISE
绿松石色
LE03



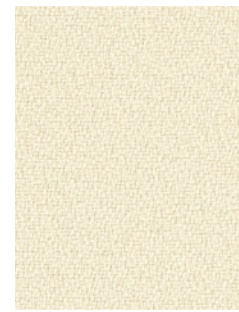
PALE TURQUOISE
灰绿松石色
LE04



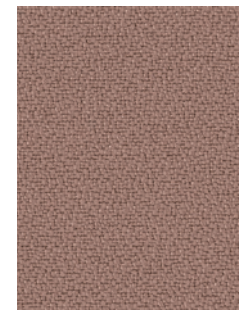
YELLOWISH PINK
皮肤色
SA02



PEARL
珍珠色
SA01



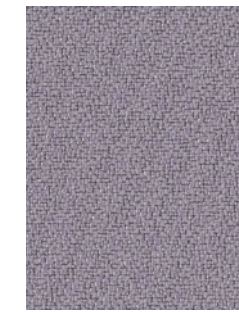
IVORY
象牙色
SA04



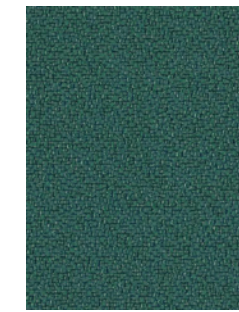
LIGHT CORAL
亮珊瑚色
LA04



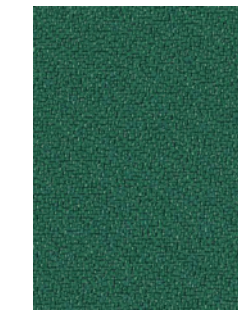
PEACH PUFF
粉桃红
LA03



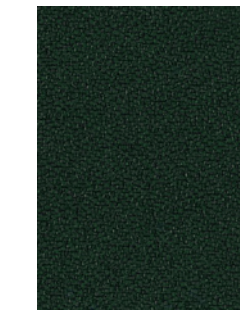
LIGHT PURPLE
藕荷色
LA01



TEAL
黛绿色
LE02



FOREST GREEN
黛绿色
GR10



DARK GREEN
墨绿色
GR09